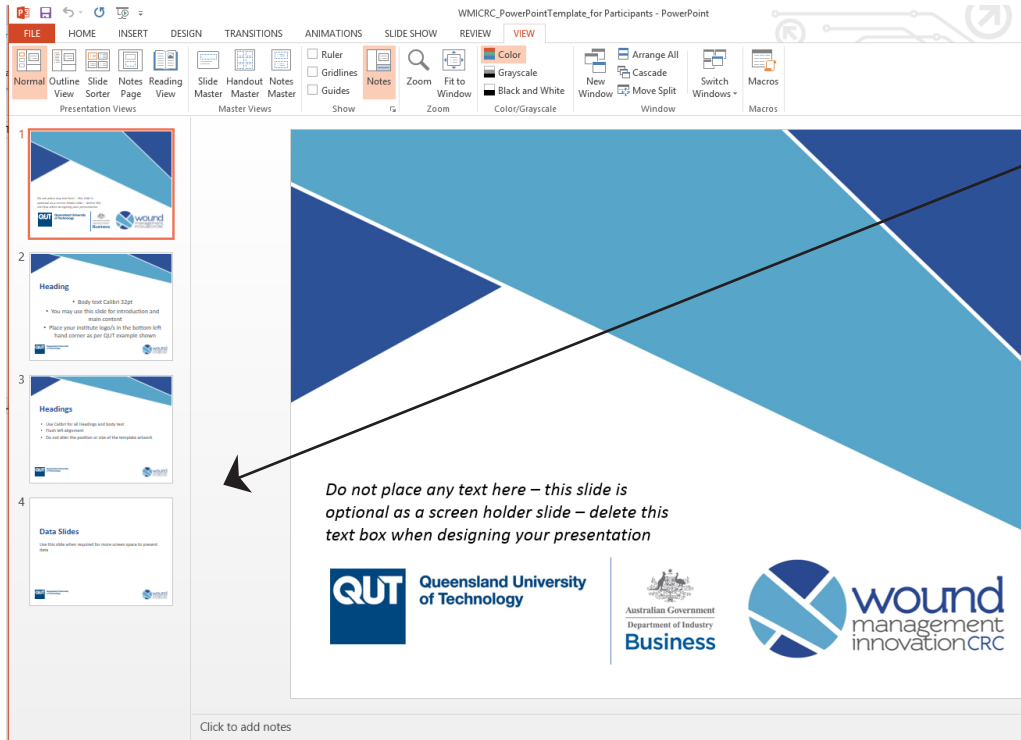
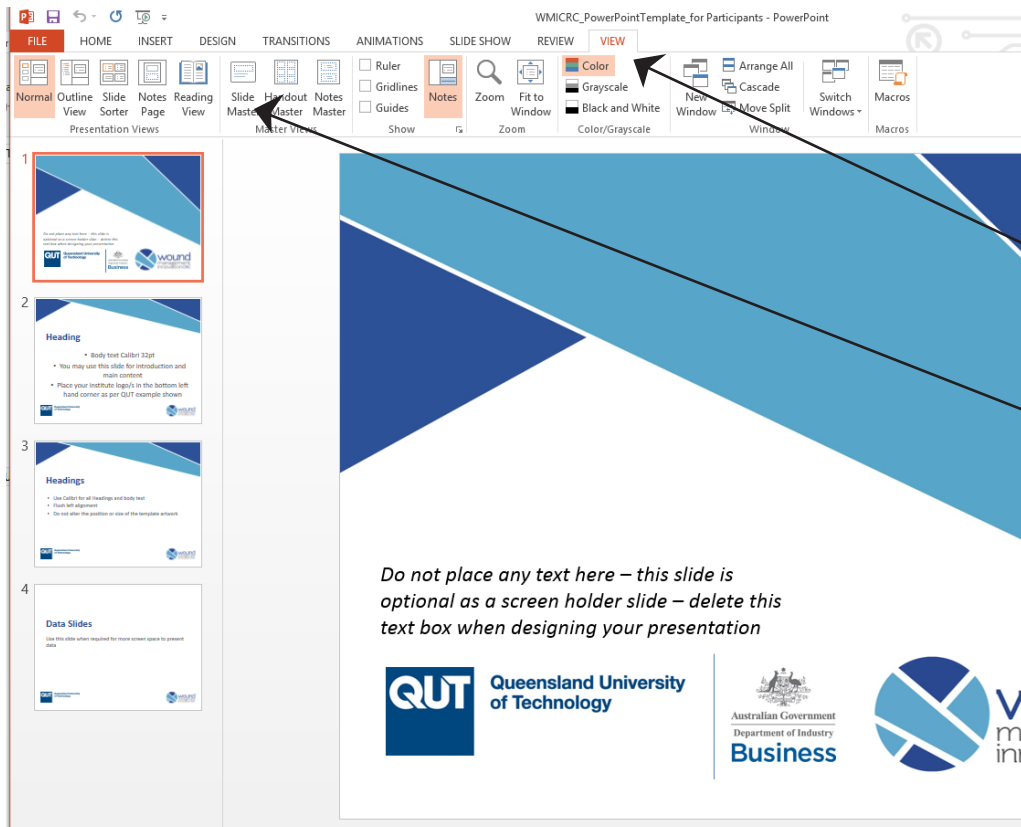


# How to use the Wound CRC PowerPoint Template for your presentations



1. When you open the document you will note that there are 4 slides with explanation text on what to do with each, more on the next page.

Please use the colors as set up in the document and follow the instructions in regard to fonts and other design aspects.

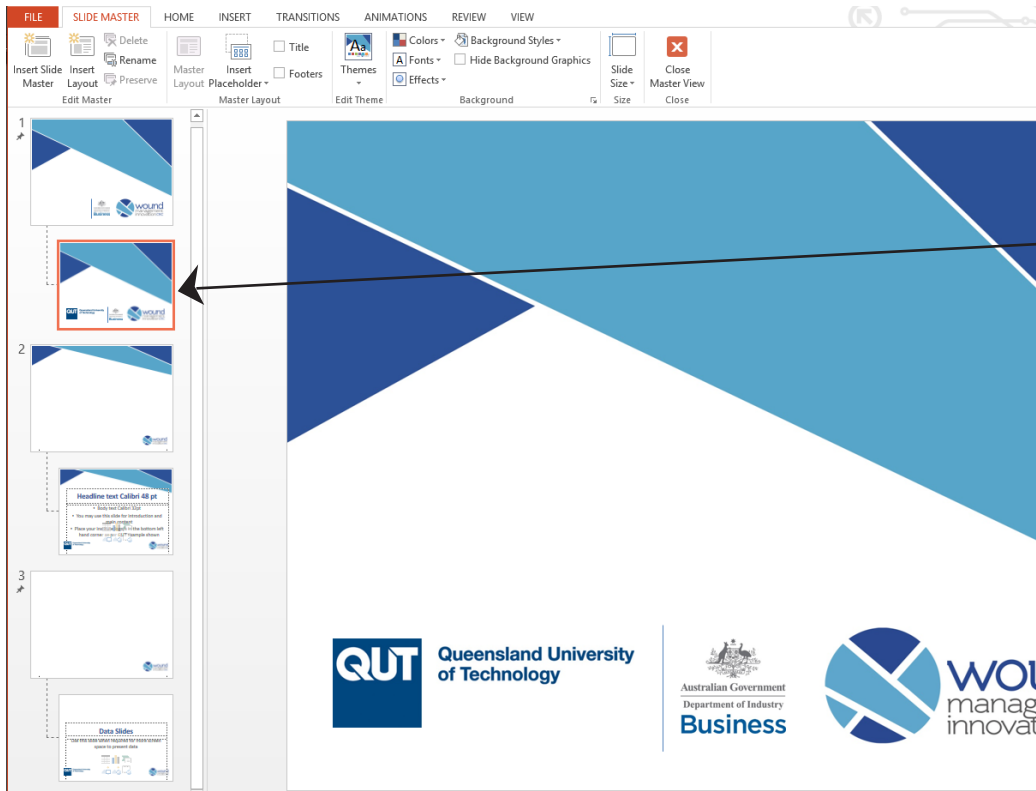


2. To insert your institute/s logos, click on:

'View'

and

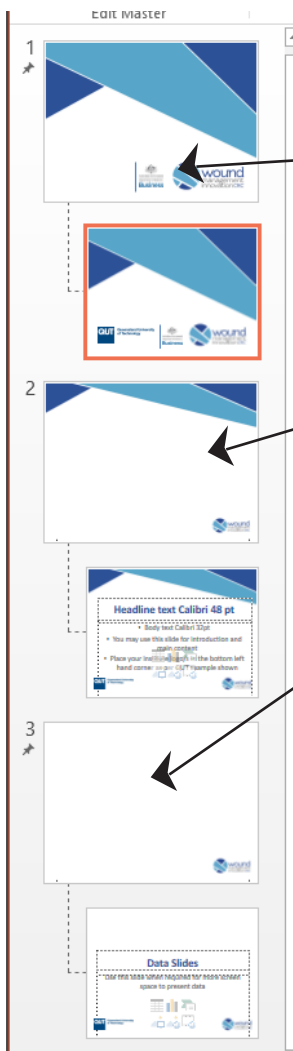
'Slide Master'



3. When you are in the Slide Master, you will note the three master pages.

The slide attached is what your presentation will look like so insert your Institute/s logo on this.

Once you have inserted the logo/s click 'Close Master View'



#### 4. Each Master Page explained:

The first master page is an optional screen holder page. For example, to be shown while a presentation is being set up or between speakers. It is not designed to place text into.

The second master page is for the bulk of the content including speaker introduction, main content etc.

The third master page is for presenting data where more screen space is required.

#### Important note:

The QUT logo placed here is for instructional purposes only. Please ask your institute/s for the correct logo to place into the presentation.